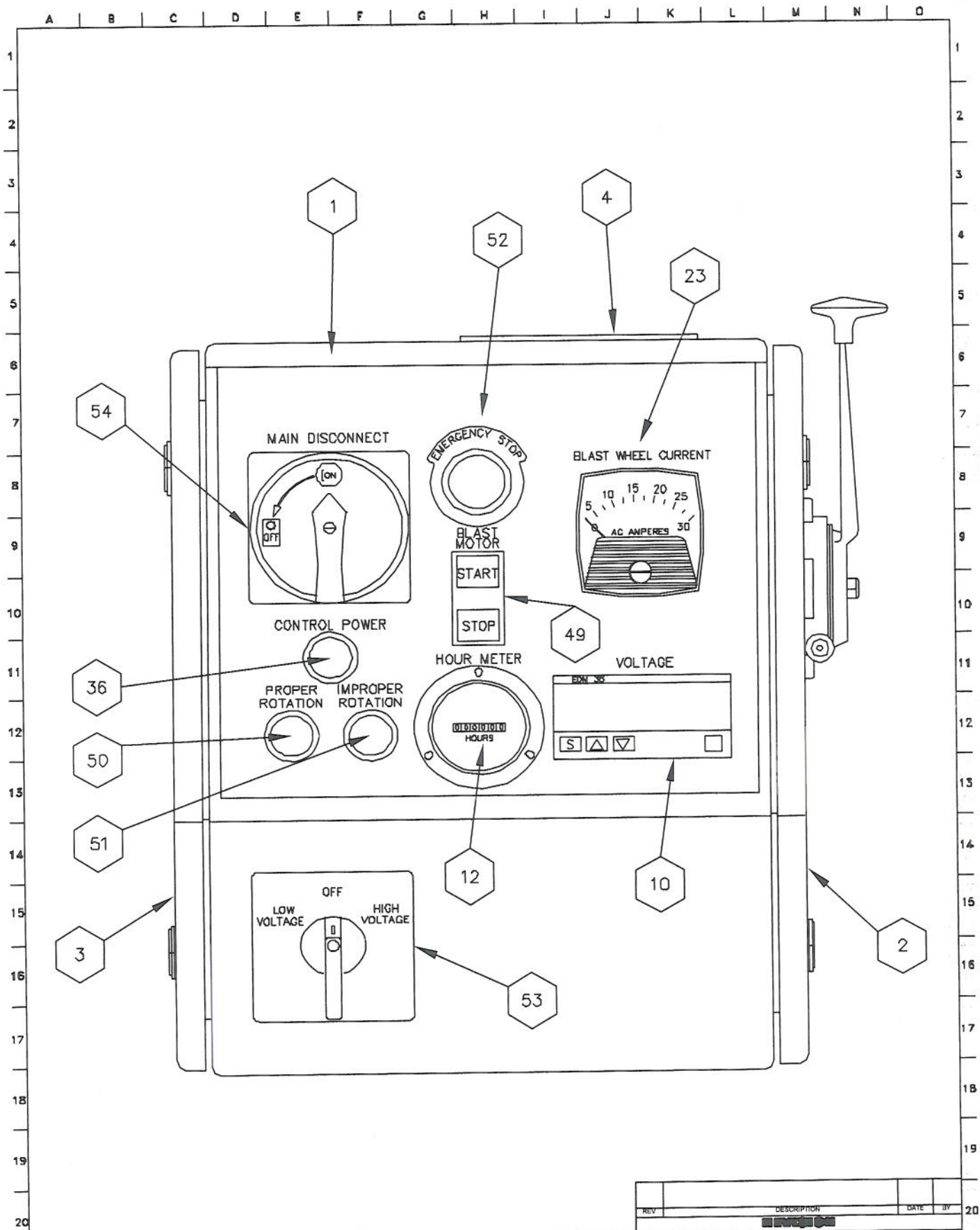


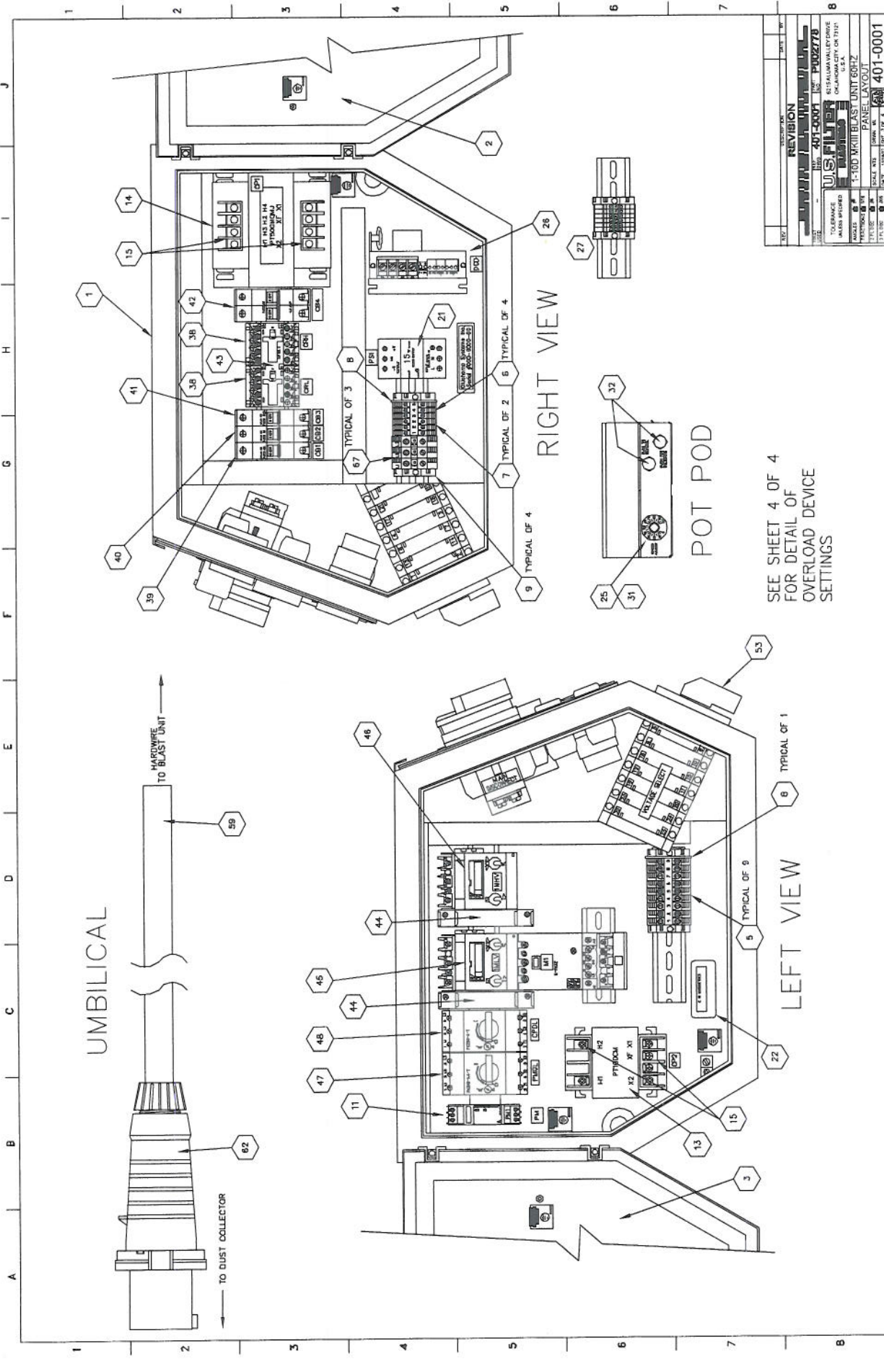
ITEM NO.	QTY	USF PN	VENDOR	CATALOG NUMBER	DESCRIPTION
1	1	P000352	OSCO	1-1099SPL	ENCLOSURE, CUSTOM
2	1	P000358	OSCO	110/115-FRM-DR	DOOR/ENCLOSURE R.H. SIDE 1-10D99 THRU 1-15DS99
3	1	P000359	OSCO	110/115-FRM-DL	DOOR/ENCLOSURE L.H. SIDE 1-10D99 THRU 1-15DS99
4	1	P000360	OSCO	110-DS-LEG-PNL	LEGEND PLATE/ FOR 1-10DS FITZALL
5	9	P000138	ALTECH	1005 2	TERMINAL BLOCK, BLACK
6	4	717051	ALTECH	1001/RED	TERMINAL BLOCK, RED
7	2	717052	ALTECH	1001/WHT	TERMINAL BLOCK, WHITE
8	2	717048	ALTECH	2001 2	TERMINAL BLOCK, END BARRIER, KBL6-10 TERMINAL BLOCK
9	4	717045	ALTECH	2005 2	TERMINAL BLOCK, END ANCHOR, TERMINAL BLOCK, 35 MM
10	1	P000190	ELECTROMATIC	EDM35-V5A-3-2-X-X-X-02	VOLTMETER, DIGITAL, 600V, 48VDC PS, DUAL RELAY (VM)
11	1	P002246	ELECTROMATIC	DPA01CM44	RELAY, PHASE MONITOR, 208-480 VOLT, AUTORANGING
12	1	P000144	ENM	T50B212	HOUR METER/ 120V, 50/60 HZ (HM) W/ GASKET
13	1	P000195	HAMMOND	PT100CM	XFMR, 480 V PRI x 240 V SEC, 100 VA (CP2)
14	1	P000196	HAMMOND	PT500MQMJ	XFMR, 240/480-120 SECONDARY (500VA) (CP1)
15	4	P000147	HAMMOND	SG4	XFMR, TERMINAL COVER (2-CP1 & 2-CP2)
16	1	P000164	HARTING	09 20 003 1440	CONNECTOR HOOD W/ PINS, TOP ENTRY (DC DRIVE)
17	1	P000165	HARTING	09 20 003 1750	CONNECTOR, HOOD, CABLE TO CABLE (DC DRIVE)
18	1	P000166	HARTING	09 20 003 2611	CONNECTOR, MALE INSERT (DC DRIVE)
19	1	P000167	HARTING	09 20 003 2711	CONNECTOR, FEMALE INSERT (DC DRIVE)
20	4	P000335	WIRE/BELDEN	66B-19362	WIRE/BELDEN 18/3, 300V, SHIELDED (4' TO DRIVE)
21	1	P000197	IDEC	PS5R-B 24V	POWER SUPPLY, 24 VDC, 15 W
22	1	P000351	CROMPTON	2RL500	CURRENT TRANSFORMER, AC, 50:5 RATIO W 24" LEADS (CT)
23	1	P000428	YOKOGAWA	250 240 LSNT/UL	AMMETER, AC, 2.5", UL RATED, 50 AMP, CT RATED, 50:5
24	1	P000160	KB	9839	HP RESISTOR, 1/4 HP
25	1	687122	KB	KB9831	POTENTIOMETER, 5K, 2 W., FOR DC DRIVE (INCLUDED W/ DRIVE)
26	1	P000159	KB	KBPB-125	DC DRIVE WITH 5 K POT W/ INTERNAL REVERSING, 120V, 50/60 HZ (DCD)
27	1		OSCO	2PTB150	ADDITIONAL TERMINAL BLOCKS W/ 150 OHM RESISTOR
28	2	P000180	ALTECH	5308 511	CORD GRIP, 0.20"-0.35", 11PG, (DC MTR-2 EACH)
29	1	P000181	ALTECH	5309 213	CORD GRIP, 0.20"-0.35", 13.5PG, (LS-1)
30	3	691925	ALTECH	5308 911	CORD GRIP/ 0.24"-0.47", .1/2" NPT, (PANEL/DC MTR AND LS)
31	1	P000392	T&B	PKS 1132/B-10	POTENTIOMETER KNOB, SCALED 1-10
32	2	P000336	IDEC	AB6M-M1-B	SWITCH, PUSH BUTTON (REVERSE & OVERDRIVE)
33	2	P000349	WAGO	809-231/222	CONNECTOR/MALE, 4 POLE, 300V
34	2	P000350	WAGO	809-231/223	CONNECTOR/FEMALE, 4 POLE, 300V, W/STRAIN RELIEF
35	12	P000430		60D-1804	WIRE, 18/4, 300V, SHIELDED (2-6' TO HANDLE)
36	1	P002217	K-M	M22-L-G/230G	PILOT LIGHT, GREEN LENS GREEN LED, 120VAC, 02 (CONTROL POWER)
37	1	P000168	K-M	ATO-11-1-I	SWITCH, LIMIT (LS1)
38	2	P000201	K-M	DIL ER 31-G (24VDC)	RELAY/ FOR SENSING "VOLT SELECT", 4PNO (CRH, CRL)
39	1	716814	K-M	FAZN C 6	CIRCUIT BREAKER/ CPT SECONDARY, 6.0 AMP (CB1)
40	1	P000203	K-M	FAZN C 1	CIRCUIT BREAKER/ 2:1 XFMR SECONDARY, 1.0 AMP (CB2)
41	1	P000202	K-M	FAZN C 0.5	CIRCUIT BREAKER/ POWER SUPPLY SECONDARY, 0.5 AMP (CB3)
42	1	P000204	K-M	FAZ2 C 1	CIRCUIT BREAKER, 1.0 AMP, TWO POLE
43	1	P000204	K-M	MV DIL E	RELAY, MECHANICAL INTERLOCK (BETWEEN CRH & CRL)
44	2	P000171	K-M	NHI11-PKZ2	AUX CONTACT, (1 NO/1 NC) FOR BLAST LOVO AND HIVO MCP (1MLV & 1MHV)
45	1	716831	K-M	PKZ 2/ZM-40/S (120)	MPS, BLAST (1MLV)
46	1	P000343	K-M	PKZ 2/ZM-25	MCP FOR BLAST (1MHV)
47	1	P000207	K-M	PKZM 0 - 0.4-T	MCP/ CIRCUIT PROTECTOR, 0.25 - 0.4 AMP, HIGH INRUSH (PMOL)
48	1	P000203	K-M	PKZM 0 - 4-T	MCP/ CIRCUIT PROTECTOR, 2.5 - 4.0 AMP, HIGH INRUSH (CP0L)
49	1	P002211	K-M	M22-DD-GR-GB1/GB0/K11	SWITCH, DOUBLE PB OPERATOR W/ 1NO & 1 NC CONTACT, 02 (PB2A&B)
50	1	P002218	K-M	M22-L-G/G	PILOT LIGHT, GREEN LENS GREEN LED, 24VDC, 02 (PROPER PHASE)
51	1	P002220	K-M	M22-L-R/R	PILOT LIGHT, RED LENS RED LED, 24VDC, 02 (IMPROPER PHASE)
52	1	P002224	K-M	M22-PV-K02	SWITCH, E-STOP, LATCHING, PULL TO RELEASE, 2 NC, 02 (PB1 E-STOP)
53	1	P000214	K-M	T5B-7-5099.64/E	VOLTAGE SWITCH/SELECTOR, 3 POSITION, 55 AMP, 600VOLT (VS)
54	1	P000174	K-M	P3-63/EA/SVB	SWITCH/ MAIN DISCONNECT SWITCH W/ HANDLE, 60 AMP (MAIN)
55	1	P001049	PMA	BVVD-N069GT	CONNECTOR/ SEALTITE, 1" 90 DEG (BLAST MOTOR)
56	4.5	P001042	PMA	CYLT-29B.50	SEALTITE/ 1" & PG29, FLEXIBLE, 44 INCHES USED
57	1	P001048	PMA	BVND-N069GT	CONNECTOR/SEALTITE, 1" STRAIGHT (PANEL)
58	70		WIRE	MTW12	WIRE, #12 AWG, THHN, STRANDED (BLAST MTR/PANEL) 7"
59	55	422987	WIRE	6/4 TYPE W	WIRE, 6 AWG, 4 CONDUCTOR, TYPE W, 55 FEET
60	2	P002231	KELLEMS	022-01-003	STRAIN RELIEF, DOUBLE EYELET, .75 - 1.0" CORD DIA
61	1	P000156	SEALCON	CD36NA-BK	CORD GRIP, 0.86"-1.26", 11/2" NPT
62	1	716843	ALTECH	S43.51A	PLUG, CABLE END, 4 WIRE, 3 POLE, 600V, 60A
63	2	P000329		SNP2450N00312	LINK, QUICK, 5/16, SPRING CLIP
64	4	P002017	HAWA	HAWA LATCH ASSY	ENCLOSURE, LATCH ASSBY C/O CASEMENT FASTENER HAWA PN 3070-7333-19-03, LATCH HAWA PN 3070-0303-00-15 AND O-RING SLOTTED BOLT HAWA PN 3070-0365-12-42
65	4	P002018	HAWA	3080-7215-16-23	HINGE
66	4	45655	RG	VL-103	VIBRATION MOUNT, 1" ROUND W/ 5/16 - 18 STUDS
67	3	P002535	ALTECH	1050 2	TERMINAL/ RK16/TERMINAL BLOCK, NEUTRAL (INCOMING POWER)
68	1	P002536	ALTECH	2104 2	TERMINAL/ END BARRIER, FOR RK16 TERMINAL BLOCK
69	1		OSCO	110/115 BACKPAN	BACK PANEL
70	1	P000588	OSCO	411-0005	POT POD COVER TOP
71	1	P000589	OSCO	411-0006	POT POD COVER BOTTOM
72	1			RB125-100	BUSHING, REDUCING, 1 1/4" X 1"
73	3			ABC 4	FUSE, CERAMIC, 4A



REV	DESCRIPTION	DATE	BY

THIS DRAWING AND THE DESIGN SHOWN THEREIN IS THE PROPERTY OF U.S. FILTER WHEELABRATOR AND USE OR COPIES THEREOF CANNOT BE MADE WITHOUT WRITTEN CONSENT.

<b>U.S. FILTER</b> <b>BLASTRAC</b>	OKLAHOMA CITY, OK 73121 U.S.A.	DATE 11/18/02	DWG. 401-0001	NO. P002778	SCALE NTS	DRWN ML
		1-10D MKIII BLAST UNIT 60HZ (FITZALL)			SHEET 2	OF 4



REVISION		DATE	BY
1	ISSUED FOR CONSTRUCTION	01/15/01	...
2	...	...	...

<b>U.S. FIRE</b> 625 S. ALAVALLEY DRIVE OKLAHOMA CITY, OK 73121 U.S.A.		PROJECT NO. 401-0001 SHEET NO. 401-0001
TITLE: 1-100 MCR III BLAST UNIT 60PZ DRAWING TYPE: LAYOUT SCALE: AS SHOWN DATE: 11/20/00 DRAWN BY: ... CHECKED BY: ...		PROJECT NO. 401-0001 SHEET NO. 401-0001

## BLASTRAC 1-10D MKIII CONTROL PANEL FOR 208/230/480V - 60 HZ W/ HIGH/LOW VOLTAGE SETUP AND VOLTAGE/PHASE ROTATION VERIFICATION

TOTAL F.L.A. LARGEST MOTOR F.L.A. 5 SUPPLY VOLTAGE	
PHASES	3
MAX. BRANCH CIRCUIT PROTECTION	150 AMP
MAX. WIRE SIZE	12.5 AWG
TERMINAL BLOCK	480 V
REWORK	NONE
BRANCH CIRCUIT PROTECTION	150 AMP

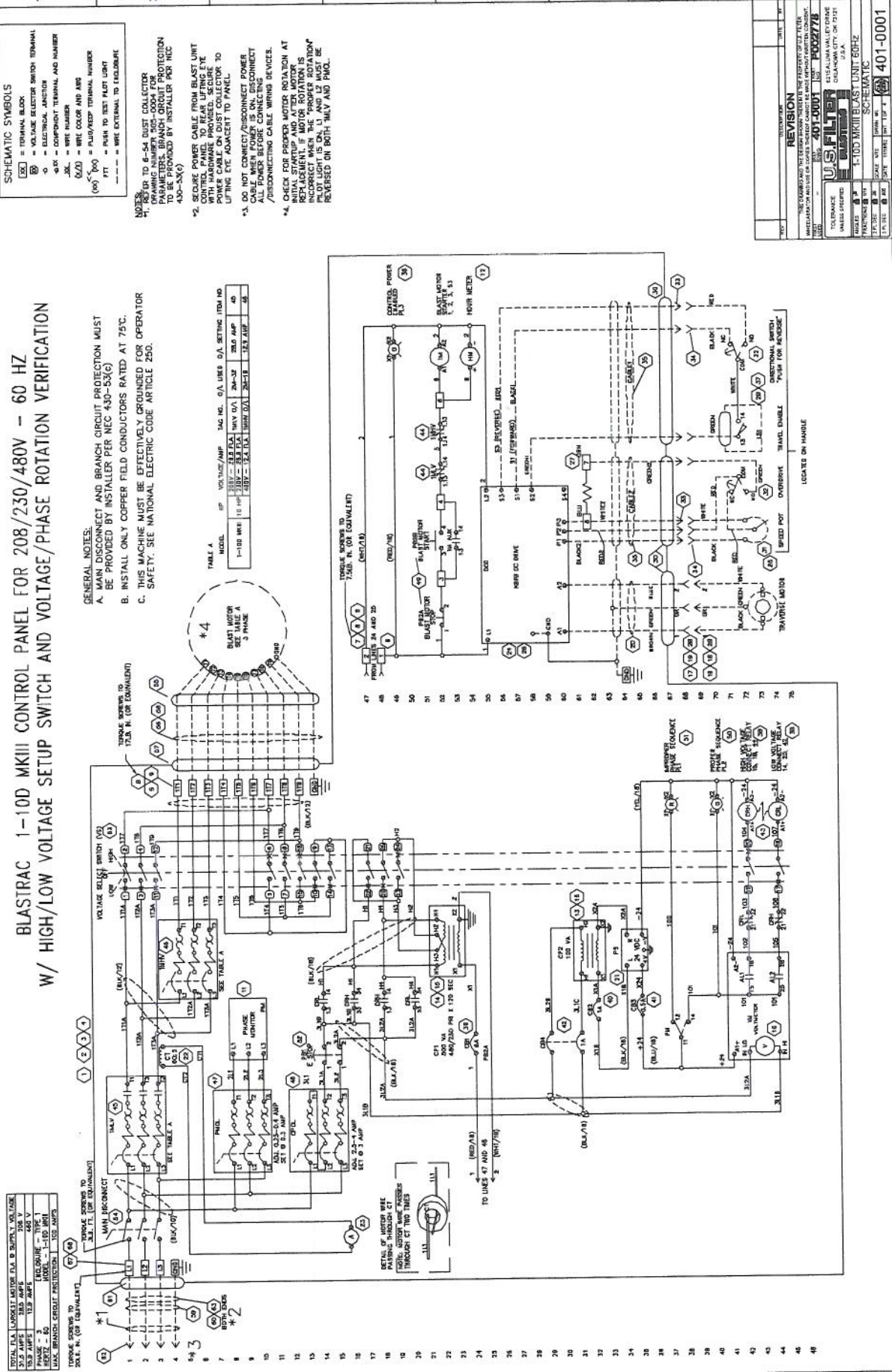


TABLE A  
MODEL 101 VOLTS/AMP TAG NO. 0/A SETTING ITEM NO

NO.	1	2	3	4	5	6	7	8	9	10	11	12	13	14	15	16	17	18	19	20	21	22	23	24	25	26	27	28	29	30	31	32	33	34	35	36	37	38	39	40	41	42	43	44	45	46
MODEL 101	101	102	103	104	105	106	107	108	109	110	111	112	113	114	115	116	117	118	119	120	121	122	123	124	125	126	127	128	129	130	131	132	133	134	135	136	137	138	139	140	141	142	143	144	145	146

GENERAL NOTES:  
 A. MAIN DISCONNECT AND BRANCH CIRCUIT PROTECTION MUST BE PROVIDED BY INSTALLER PER NEC 430-53(G)  
 B. INSTALL ONLY COPPER FIELD CONDUCTORS RATED AT 75°C.  
 C. THIS MACHINE MUST BE EFFECTIVELY GROUNDED FOR OPERATOR SAFETY. SEE NATIONAL ELECTRIC CODE ARTICLE 250.

- NEVER TO 6-54 DUST COLLECTOR PARAMETERS. BRANCH CIRCUIT PROTECTION TO BE PROVIDED BY INSTALLER PER NEC 430-53(G).
- SECURE POWER CABLE FROM BLAST UNIT CONTINUOUSLY TO PROVIDE SECURE POWER CABLE ON DUST COLLECTOR TO LIFTING EYE ADJACENT TO PANEL.
- DO NOT CONNECT/DISCONNECT POWER CABLE WHEN POWER IS ON. DISCONNECT CABLE BY TURNING OFF POWER AND/OR DISCONNECTING CABLE WIRING DEVICES.
- CHECK FOR PROPER MOTOR ROTATION AT INITIAL STARTUP AND AFTER MOTOR REPLACEMENT. IF MOTOR ROTATION IS INCORRECT, THE MOTOR ROTATION MUST BE REVERSED ON BOTH 11L1 AND 12L1.

SCHMATIC SYMBOLS

[Symbol]	TERMINAL BLOCK
[Symbol]	RELAY OR SWITCH
[Symbol]	DIODE OR RECTIFIER
[Symbol]	COMPONENT SECTION
[Symbol]	WIRE NUMBER
[Symbol]	WIRE COLOR AND A/R
[Symbol]	WIRE TO TEST PLUG LIGHT
[Symbol]	WIRE EXTERNAL TO FIELD/SPR

REVISION	
401-0001	
U.S. FILTER	
ELECTROMECHANICAL DIVISION	
401-0001	
1100 MKIII BLAST UNIT 60HZ	
SCHEMATIC	
DATE	11/10/50
BY	J.M.
CHKD BY	J.M.
APPROVED BY	J.M.
REVISION	11/10/50
BY	J.M.
CHKD BY	J.M.
APPROVED BY	J.M.